

## Baccarat Game Protection & Advantage Play

Over thirty years ago George Joseph was the Expert Witness for the New Jersey DOJ on a Baccarat Scam which netted thieves \$3,000,000.00 in two nights of play. As a direct result of that scam he wrote a computer program to quantify the effects of known cards in Baccarat...

### Baccarat 1<sup>st</sup> Card Advantage

```

BASIC.EXE
PLAYER WINS = 16772
BANK WINS = 10355
TIE HANDS = 2873
TOTAL HANDS = 30000

PLAYER % = 55.91%
BANK % = 34.52%
TIES % = 9.58%
PLAYER ADVANTAGE = 21.39%

FIRST CARD SELECTED WAS.... ?
DO YOU WISH TO RUN THE SAME NUMBER AGAIN..<Y..N..>

```

The Effects of  
**Marked Cards**  
in a Baccarat Game

a computer study by  
George Joseph  
Las Vegas

**“HAND MUCKING”**  
THE ART OF SWITCHING  
CARDS IN PLAY

GEORGE JOSEPH  
LAS VEGAS

George also wrote the 1st Book Describing Handmucking - Baccarat Cheating Device

## "Can Baccarat Be Beaten By Card Counting"

```

C:\ BASIC.EXE
*****
<<<< BACCARAT CARD COUNT >>>>
(Developed by GEORGE D. JOSEPH)
*****
Enter Cards...0,1,2,3,4,5,6,7,8,9...As You See Them Played
Press (S) For Reshuffle.....Press (E) To END...
*****
RUNNING COUNT
*****
PLAYER.....BANKER.....TIE.....SHOE.....CARD.....CARD #
*****
19.05000 -19.02000 -160.21000 400 0 16
*****
TRUE COUNT %
*****
PLAYER.....BANKER.....TIE.....SHOE.....CARD.....CARD #
*****
-1.18746 -1.10546 -14.76013 400 0 16

```

Cards Remaining: 409 Decks Remaining: 7.87

Shuffle

32

2 32	3 32	4 32	5 31
6 32	7 30	8 32	9 28
10 32	J 32	Q 32	K 32

Show Cards Remaining Undo

Number of Decks 8

Baccarat Basic	Running Count %	True Count %
Player Bet	14.43	-1.1998
Banker Bet	-14.15	-1.0925
Tie Bet	-30.83	-14.4350

<b>Simple Whole Number Count</b> -3 <i>Bet Player at -4 or less</i> Banker Red - Player Blue	<b>Advanced Whole Number Count</b> -16 <i>Bet Player at -15 or less</i> Banker Red - Player Blue
<b>Dragon Basic</b> Dragon Count: 0.6357 Dragon Running Count: 5 Bank Wins 3 Card 7 - 40 to 1	<b>Dragon Bonus</b> Dragon Bonus Count: -1.2714 Dragon Bonus Running Count: -10 Win Natural or Natural Tie OR Win By 9,8,7,6,5,4
<b>Panda 8</b> Panda Count: 12 Player Wins 3 Card 8 - 25 to 1	<b>Lucky Pair Wager</b> <i>Remaining Cards &lt;= 60</i> Current LP Weight: NA Current LP Target: NA <i>Ineligible: More than 60 Cards remaining</i> 1st Two Cards Pair Player or Banker

In the early 1980's George Joseph wrote a computer program to count the traditional Baccarat Game to assess advantages in live play. The initial Count Program has been upgraded to include the more profitable Advantage Play Baccarat Side Bet Wagers...

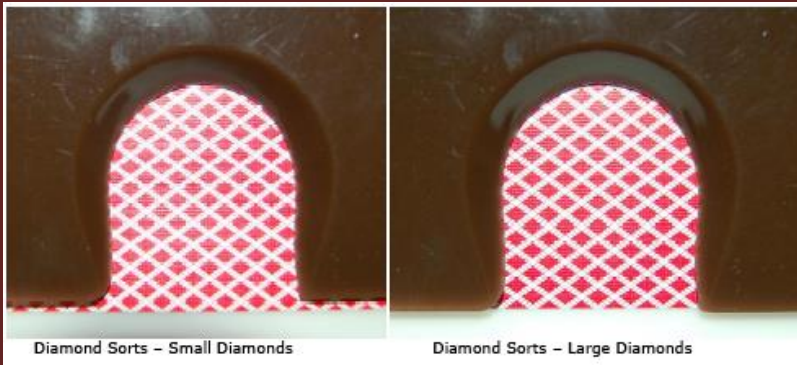
Dragon 7    Dragon Bonus    Panda 8    Lucky Pairs

**The program alerts surveillance when the customers have the advantage over the house and/or alerts to show which side Player or Banker has the "Least Disadvantage"**



# Several Baccarat Cheating Scams & Advantage Play Schemes Will Be Demonstrated

Baccarat Edge Sort Scams



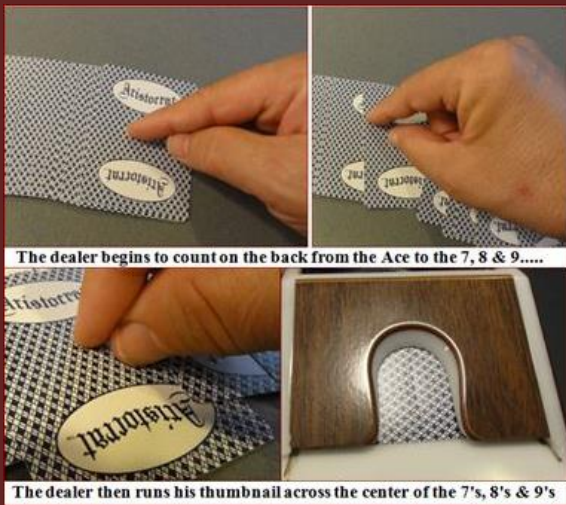
Cell Phone App to Count Side Bets



Baccarat Hidden Camera Scams



Dealer Marking Cards on Game Opening



Baccarat Pad Cut Card Scheme



Baccarat Riffle Cut Camera Scam



Baccarat Surveillance Scheme

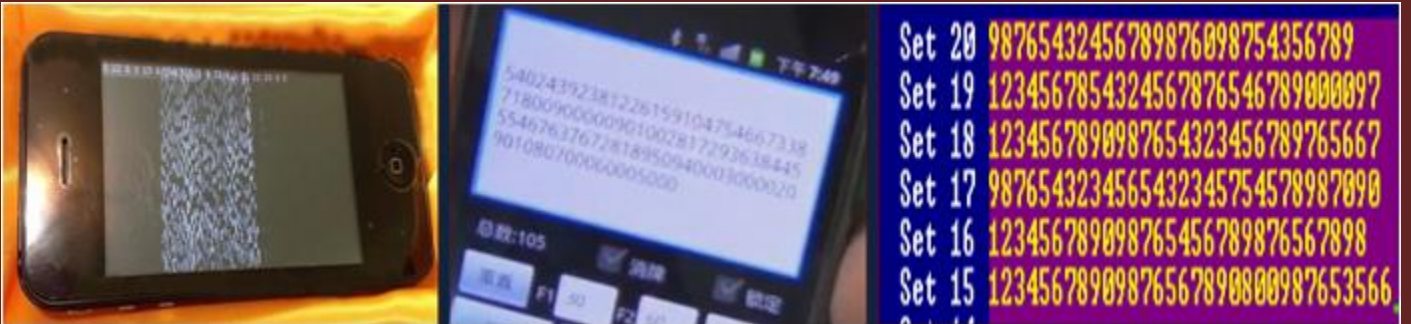
**Gambler Hacked  
Surveillance Cameras  
To Win \$33.2 Million  
In Australia**



"How Are Baccarat Cheats Exploiting The Pre-Shuffled Card Policy...?"



# Learn Several High Tech Baccarat Cheating Methods & Advantage Plays



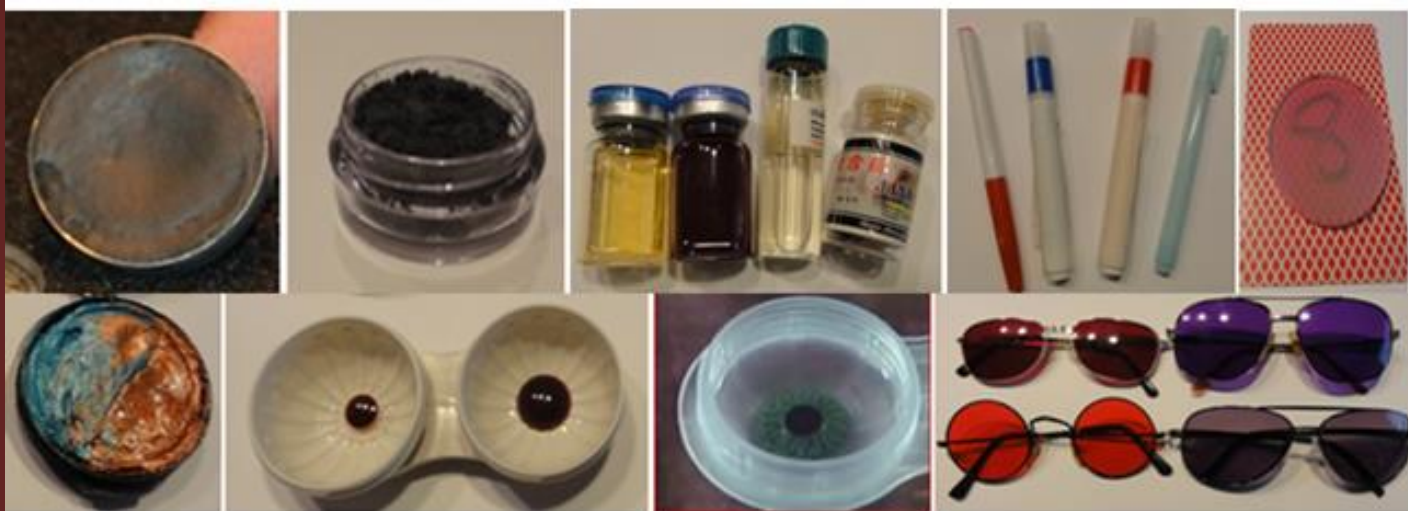
Player:35 Bank:46 Player has a Natural Player:35 Bank:46 Result: <b>PLAYER WINS</b>	Player:68 Bank:79 Player:680 Bank:79 Result: <b>BANKER WINS</b>	Player:80 Bank:78 Player has a Natural Player:80 Bank:78 Result: <b>PLAYER WINS</b>	Player:64 Bank:55 Player:646 Bank:557 Result: <b>BANKER WINS</b>
Player:79 Bank:80 Banker has a Natural Player:79 Bank:80 Result: <b>BANKER WINS</b>	Player:80 Bank:09 Player has a Natural Banker has a Natural Player:80 Bank:09 Result: <b>BANKER WINS</b>	Player:68 Bank:74 Player:683 Bank:746 Result: <b>TIE</b>	Player:80 Bank:78 Player has a Natural Player:80 Bank:78 Result: <b>PLAYER WINS</b>
Player:97 Bank:86 Player stands Player:97 Bank:865 Result: <b>BANKER WINS</b>	Player:86 Bank:75 Player:863 Bank:755 Result: <b>TIE</b>	Player:59 Bank:80 Banker has a Natural Player:59 Bank:80 Result: <b>BANKER WINS</b>	Total Results: Hands: 31 Player: 12 Banker: 15 Ties: 4

We'll go over a new technique I've been experimenting with to detect Marked Cards using your scanner and Adobe Photoshop... (It's "Pretty Cool" to watch the markings just appear.)





Various Scopes and Mobile Devices Which can be used to Examine Playing Cards



Daubs

Contact Reader Lenses

Infrared Chemicals

Card Marking Pens

"Reader" Glasses

Filters

We will review various High & Low tech card marking methods and investigative techniques

- "What is the Effect of Known Cards or Sequences in Baccarat?"
- "What is the Major Flaw when analyzing Baccarat Player Wins/Losses...?"
- "What Are The Most Important Baccarat Game Protection Procedures...?"
- "What Are The Most Important Elements a Floor Person or Surveillance Should Look for or Investigate on a Baccarat Game...?"

All of the Baccarat Scams & Schemes & Advantage Plays Will be Exposed on Surveillance Video...  
Many Drawn From Casino Prosecution Cases.



# Pai Gow Tile - Game Protection & Advantage Play

```

C:\ BASIC.EXE
<<<< PAI GOW TILE - HAND FORMULATION PROGRAM >>>>
  (DEVELOPED BY GEORGE JOSEPH..COPYRIGHT 1988)
*****
Enter The BANKER'S 1st. TILE = ? 55
Enter The BANKER'S 2nd. TILE = ? 12

Enter The BANKER'S 3rd. TILE = ? 65
Enter The BANKER'S 4th. TILE = ? 33
*****

RANK OF TILES..1 & 2 = 51      Higher RANKS = 116
RANK OF TILES..3 & 4 = 59      Higher RANKS = 92          208

RANK OF TILES..1 & 4 = 51      Higher RANKS = 116
RANK OF TILES..2 & 3 = 57      Higher RANKS = 96          212

RANK OF TILES..1 & 3 = 6       Higher RANKS = 232
RANK OF TILES..2 & 4 = 77      Higher RANKS = 42          274

*****

PRESS <Y> To BEGIN AGAIN....<E> To END PROGRAM....<M> MAIN MENU
  
```

35 years ago George Joseph wrote Tile Programs for Optimal Play & Hand Comparison to allow surveillance to quickly assess Pai Gow Tile hands

HOUSE HIGH HAND RANK = 102      HOUSE LOW HAND RANK = 101  
 PLAYER HIGH HAND RANK = 100      PLAYER LOW HAND RANK = 99

House US. Player HIGH HAND = 102 vs. 100    US. LOW HAND = 101 vs. 99  
 House Wins High Hand & Low Hand...House WINS Bets.

**A** 8/0

**B** 6/2

**C** 6/2

**PAI GOW TILE - HAND FORMULATION PROGRAM**

```

<<<< PAI GOW TILE - HAND FORMULATION PROGRAM >>>>
  (DEVELOPED BY GEORGE JOSEPH..COPYRIGHT 1992-2018)
  (WINDOWS CONVERSION BY C&C)
*****
RANK OF TILES..1 & 2 = 1      Higher RANKS = 244
RANK OF TILES..3 & 4 = 71     Higher RANKS = 58          302

RANK OF TILES..1 & 4 = 51     Higher RANKS = 116
RANK OF TILES..2 & 3 = 14     Higher RANKS = 210          326

RANK OF TILES..1 & 3 = 14     Higher RANKS = 210
RANK OF TILES..2 & 4 = 50     Higher RANKS = 122          332

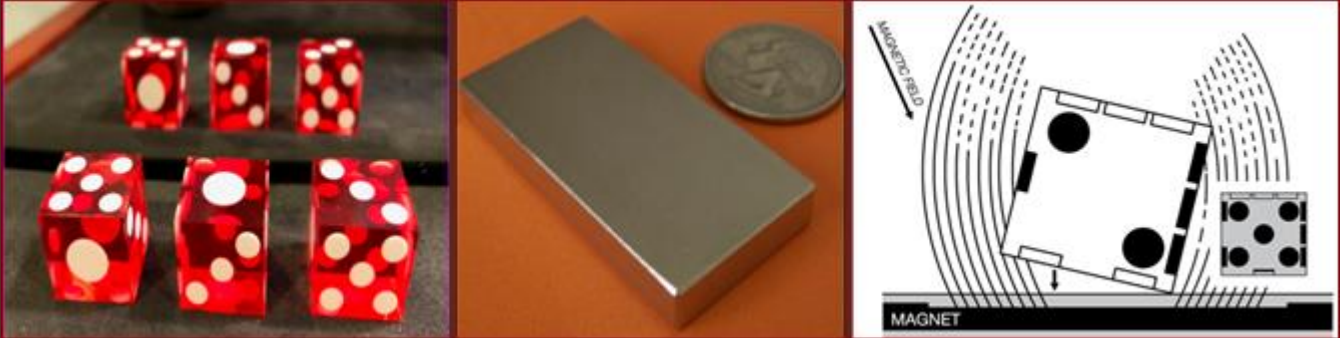
*****

Enter Bankers 1st Tile 55
Enter Bankers 2nd Tile 64
Enter Bankers 3rd Tile 11
Enter Bankers 4th Tile 33

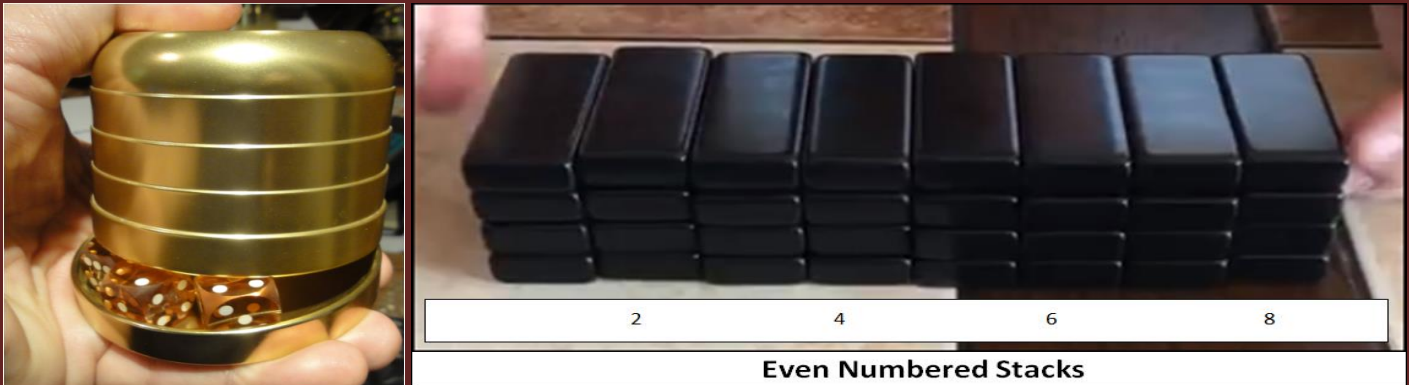
Look Up Quit
  
```

You might be surprised to learn that House Way is not Optimal Strategy

This presentation will expose live and on video several Tile Cheating Methods



Trick Dice for Pai Gow Tiles... "Tops...Tees...Loaded Dice...Magnetic Dice Schemes"



Dice Cup Control...False Tile Shuffles & False Deliveries - Stacking Tiles...Mis-Set Hands



Marking Tiles for "Touch" - High Tech Tile Marks - Reading Tiles With A Cell Phone...



## Switching Tiles "Playing Heavy" and Pai Gow Tile Hand Switching Schemes

- "What is a Freeze Out in Pai Gow Tiles...?" ... "How Effective Is A Freeze Out?"
- "What is the Advantage to Know "One" House Tile...?...Or All The House Tiles?"
- "What is the Count Down Scheme...?"
- "What Percentage of Pai Gow Tile Hands End in a Tie...?"
- "What is the "Easiest" Way to Steal in Pai Gow Tiles...?"

George Joseph began his gaming career in Las Vegas in 1974 as a dealer and entertainer. He worked for the owners of the Aladdin Hotel, the owner of the Dunes Hotel, the owner of Treasure Island, for two years was consultant to the Canadian Government OLCG and was for 10 years the Corporate Director of Surveillance for the Bally Corporation Casinos Worldwide.

George served for 10 years on the Board of Directors and Ethics Committees of the Nevada Polygraph Association and holds several gaming and vendor licenses. He is currently president of Worldwide Casino Consulting, a Nevada based corporation whose core business is casino game protection training and compliance reviews.

Mr. Joseph has been instrumental in uncovering many of the biggest casino scams in the gaming industry and has been a consulting investigator and expert witness in countless casino cheating and Baccarat prosecutions for over thirty years. George Joseph regularly appears on National Television specials which feature casino cheating.

Phone: 702-499-3280 Email: [GJLV@AOL.COM](mailto:GJLV@AOL.COM) Web-Site: [WWW.GJLV.COM](http://WWW.GJLV.COM)

Training Site: [WWW.GEORGEJOSEPHTRAINING.COM](http://WWW.GEORGEJOSEPHTRAINING.COM)

Remember: *"The Procedure Is Stronger Than The Move"*

